

Arcturus Ventures Inc

MINERAL EXPLORATION

TSX-V : AZN



Company and Project Overview

January 2011

www.arcturusventuresinc.com



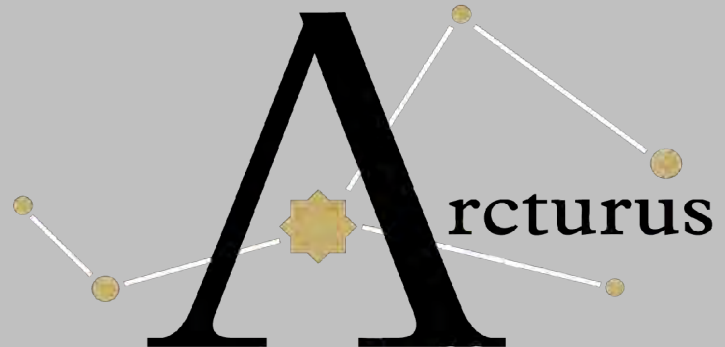
Arcturus Ventures Inc

Arcturus Ventures Inc

TSE-X : AZN

- Canadian based mineral exploration company headquartered in Vancouver, Canada and trades on the Toronto Venture Exchange under the symbol AZN
- Focused in northern Canada: a large, politically stable, under-explored frontier region with the potential to host world class ore bodies
- Interests in mineral properties located the Finlayson Lake District and Whitehorse Copper Belt of Yukon
- Additional interests in Colombia: potential gold bearing properties in the Antioquia Department

About Our Logo



Arcturus is the brightest star in the Constellation Boötes, and the third brightest star in the night sky. Arcturus is a red giant star which indicates that the spectrum of light given off by the star is unusual and full of emission lines. It is at least 110 times more luminous than the Sun. The name of the star derives from ancient Greek Ἄρκτοῦρος (Arktouros) and means "Bear Guard." This is a reference to it being the brightest star in the constellation Boötes (of which it forms the left foot), which is next to the Big and Little Bears, Ursa Major and Ursa Minor. In Inuit astronomy, Arcturus is called the Old Man.



Board of Directors

Blake Macdonald

President and Director

- Over 40 years of experience in the mining exploration industry having worked in mining exploration, in North, Central and South America
- During the last 20 years he has served in management or as a director for approximately 12 publicly traded companies
- BA in Commerce at Simon Fraser University

Brandon Macdonald

Director and Vice President

- Previously with Macquarie Bank in the Metals and Energy Capital Division
- Experienced with high-value financial transactions and asset valuations
- MBA with Distinction from Oxford University, B.Sc. (Geology) from UBC
- Field experience in Mexico, the Yukon and Nunavut

Raz (Shiraz) Hussein

CFO, Secretary and Director

- Has been the Company's Director, Chief Financial Officer and Secretary since November 17, 1998
- Over 15 years of experience as a CFO, controller and an accountant in natural resource, retail and construction industries
- Active in the venture capital markets and has held various positions as officer and director of various reporting companies

Jack McClintock

Director

- Over 30 years experience in the mineral exploration business including managing large exploration organizations
- Currently CEO of Savant Explorations Ltd
- Formerly Global Exploration Manager with BHP Billiton
- BSc in Geology from the University of British Columbia and MBA from Simon Fraser University



Officers and Advisors

Tom Adamson

Director

- 40 year career in the technical, administrative and regulatory management of publicly-traded mineral exploration and development companies
- Graduated from the University of British Columbia with a B.Sc.(Geology) degree in 1967
- Member of the Association of Professional Engineers and Geoscientists of B.C

Glen Macdonald

Advisor

- BSc Geology from UBC and member of APPEGA and BCAPEG
- Over 35 years experience on exploration projects throughout Canada, the USA, Russia, South America and Africa
- Experienced with base metals, Au, Ag, diamonds and gemstones in various geological styles

Robert Stroshein

Advisor

- 35 years of experience in mineral exploration, development and mining
- BSc from the University of Saskatchewan and a member of the Association of Professional Engineers
- Provides geological consulting to Arcturus as an independent "Qualified Person" as set out under NI 43-101

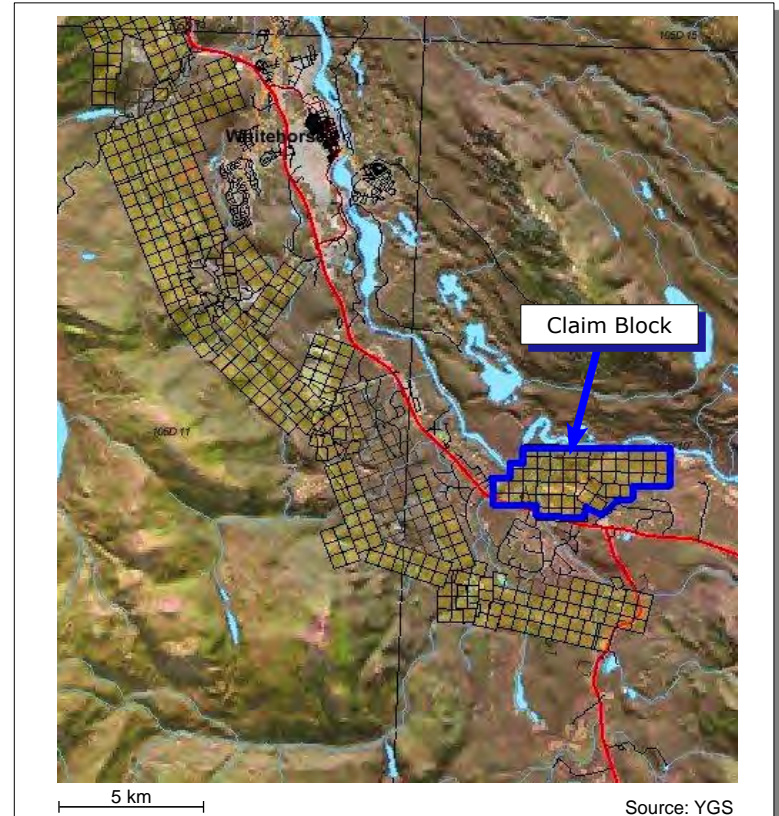
Alberto E. Martinez

Advisor

- 30 years experience in the resource industry in Latin America including time with Intercor (Exxon), Greenstone Resources and Eldorado Gold Corp
- Experienced with negotiations, management and acquisition in Mexico and Colombia
- B.Sc. Engineering from U del Norte (Colombia) and MBA from University of Dallas

Project Details

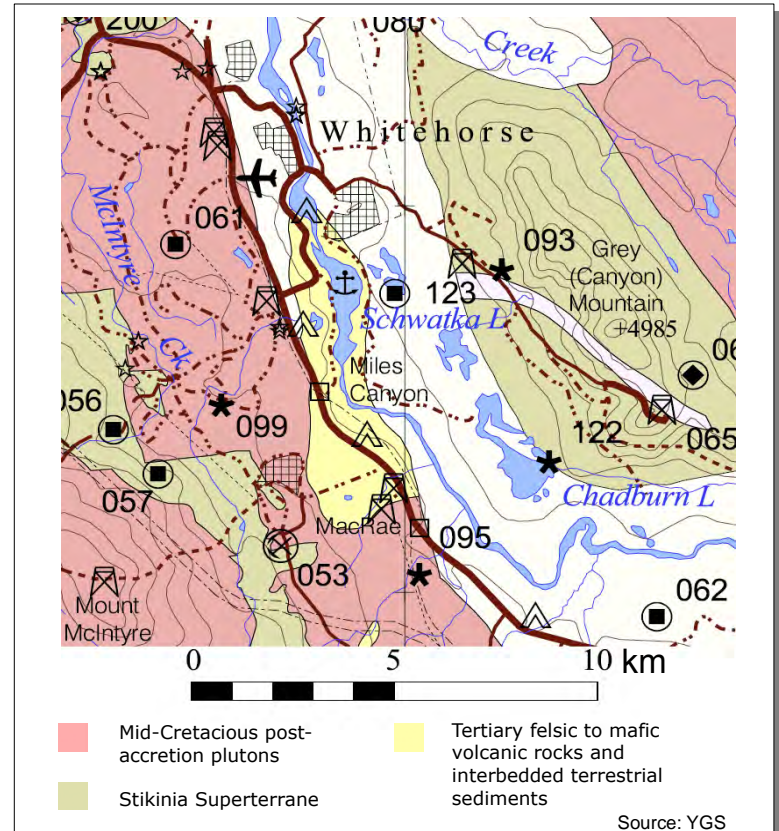
- Lewes River Project claims cover 10 sq kilometres of the southern portion of the Whitehorse Copper Belt
- Covers over four kilometres of the favourable contact between the diorite intrusive rocks of the Whitehorse Batholith and the sedimentary rocks of the Laberge and Lewes River Group rocks
- North-west trending intrusive complex is approximately 30 kilometres long and up to five kilometres wide, with the favourable host rocks present along all sides of the batholith
- Intrusive/sedimentary contact hosts the numerous known deposits of the formerly producing Whitehorse copper belt (WCB), where copper-rich skarn hosted orebodies occur primarily within limestone of the Lewes River group adjacent to or in proximity of embayments or pendants in the Whitehorse Batholith



Whitehorse Copper Belt

Background Info on the WCB

- Copper-gold-silver mineralization in the WCB occur in calc-silicate garnet-diopside +/- magnetite/wollastonite/epidote skarns
- The metal-rich skarn mineralization can be detected by modern geophysical methods such as magnetic or Induced Polarization(IP) surveys
- The WCB has documented historical production in excess of 11 million tonnes grading on average 1.1 per cent copper, 0.63 gram per tonne gold and 7.98 g/t silver from at least 12 deposits
- Additional known mineralized skarn zones are under active exploration elsewhere in the belt by others.

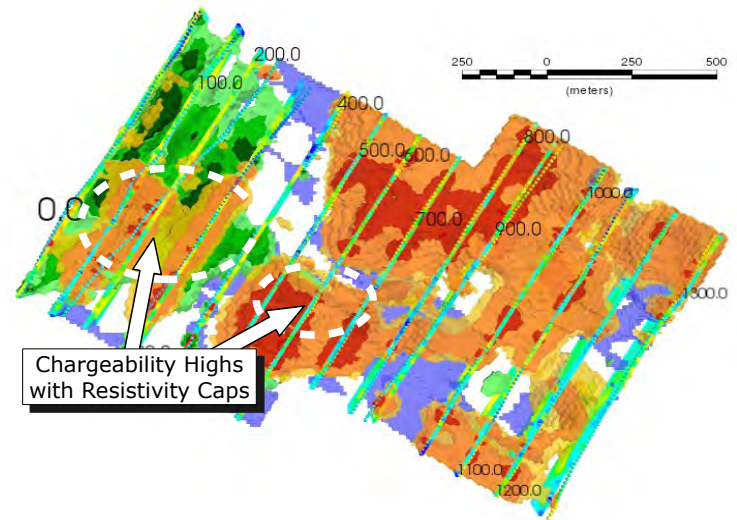


Lewes River: Geophysics

2009 Induced Polarization Interpretation

- Magnetic surveys and a 13.4 km induced polarization survey have been carried out
- Geophysical interpretation completed Aug/09 by SJV Consultants Ltd.
- Drill targets defined within three zones of chargeability highs possibly reflecting copper sulphide mineralization typical of the Whitehorse Copper Belt
- Two of these zones occur within magnetically interpreted embayments of the batholith representing areas of highest potential to host copper bearing skarns

Chargeability and Resistivity features from 3D inversion

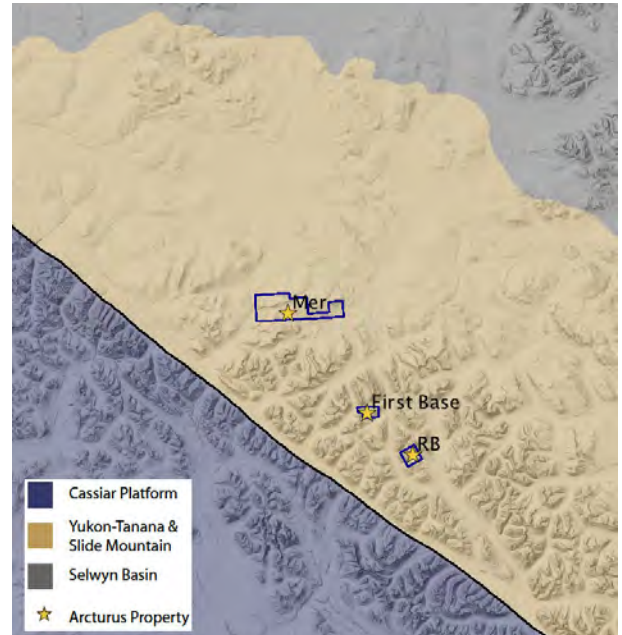


Chargeability highs are in light green (>6 ms), green (>7 ms), and dark green (>8ms). Resistivity Lows (<100 Ohm-m) are in blue. Resistivity highs are in orange (>300 Ohm-m), light red (>500 Ohm-m), and red (>3500 Ohm-m)

Finlayson Lake Projects

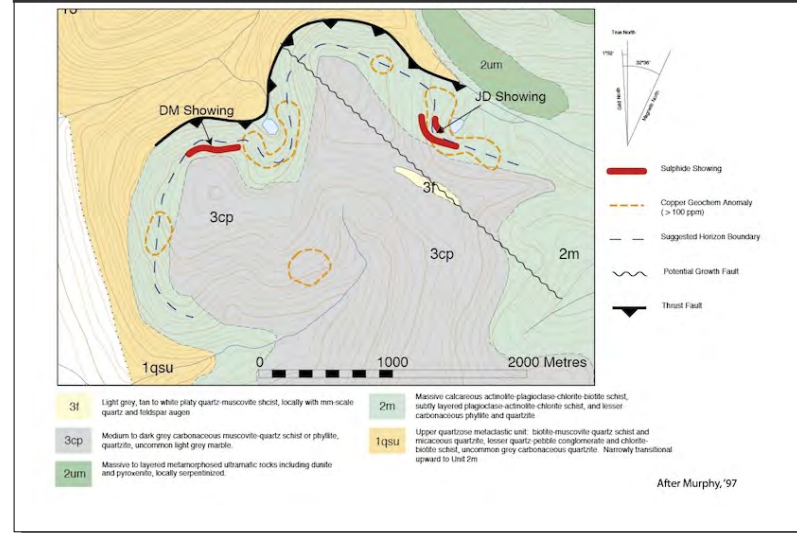
- The Finlayson Lake area has a long and storied history of gold and base metal exploration and is host to several important Volcanogenic Massive Sulphide (VMS) discoveries: Kudz Ze Kayah, Wolverine and Fyre Lake
- On the RB property airborne geophysics indicates the presence of a possible northwest-trending structure, which may be similar to the growth fault at Fyre Lake
- The 1st Base property is underlain by similar geology to the area surrounding the Kudz Ze Kayah deposit and has strongly anomalous geochemistry for Cu, Pb and Zn
- The Mer property has similar units and intrusions to the recent gold discoveries in the White River area

Finlayson Lake Area Properties



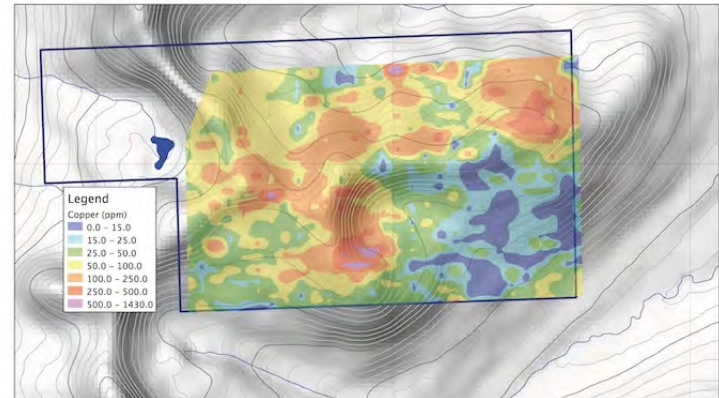
- On the RB property airborne geophysics indicates the presence of a possible northwest-trending structure, which may be similar to the growth fault at Fyre Lake
- Geochemical sampling and prospecting at RB has revealed a broad copper and gold anomaly. The DM showing yielded an analysis of 1.0% Cu and 0.16 g/t Au while the JD showing yielded 0.64% Cu and 0.53 g/t Au.
- Arcturus believes the growth fault at RB may host a VMS orebody of significant size
- The RB property will be drilled in early Summer 2011 in conjunction with down-hole geophysical surveys to locate and identify the characteristics of any VMS orebody that may be present

RB – Geology and Overview

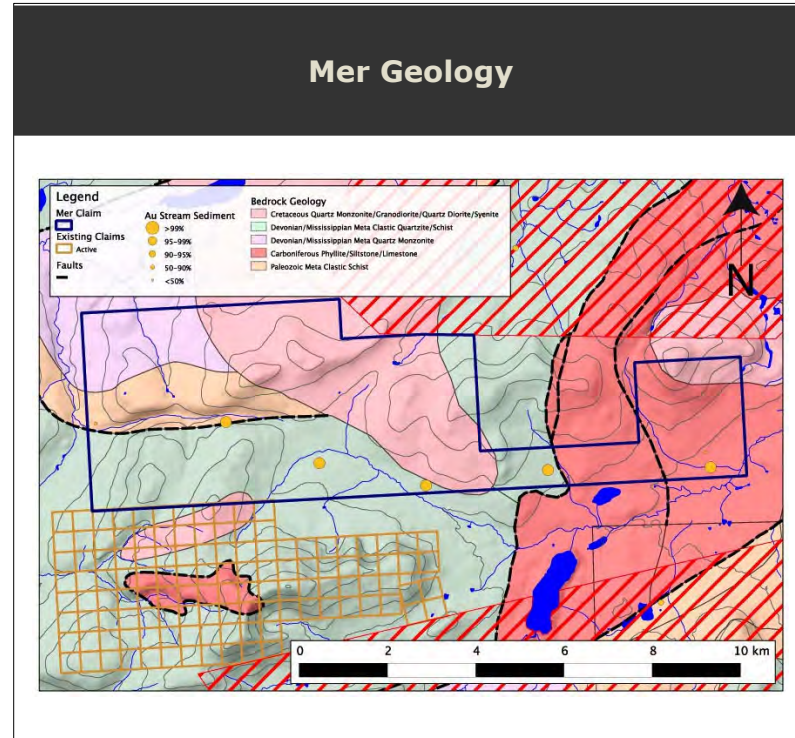


- The property is underlain by similar geology to the area surrounding the Kudz Ze Kayah deposit
- Past work has yielded soil geochemical anomalies with peaks of 1430 ppm Cu, 5700 ppm Zn and 2040 ppm Pb
- Several geophysical anomalies (mag and EM) coincident with geochemical ones have been identified as potential drilling targets
- Areas of anomalous geochemistry and with geophysical anomalies will be drilled in early Summer 2011

1st Base Copper Soil Geochemistry

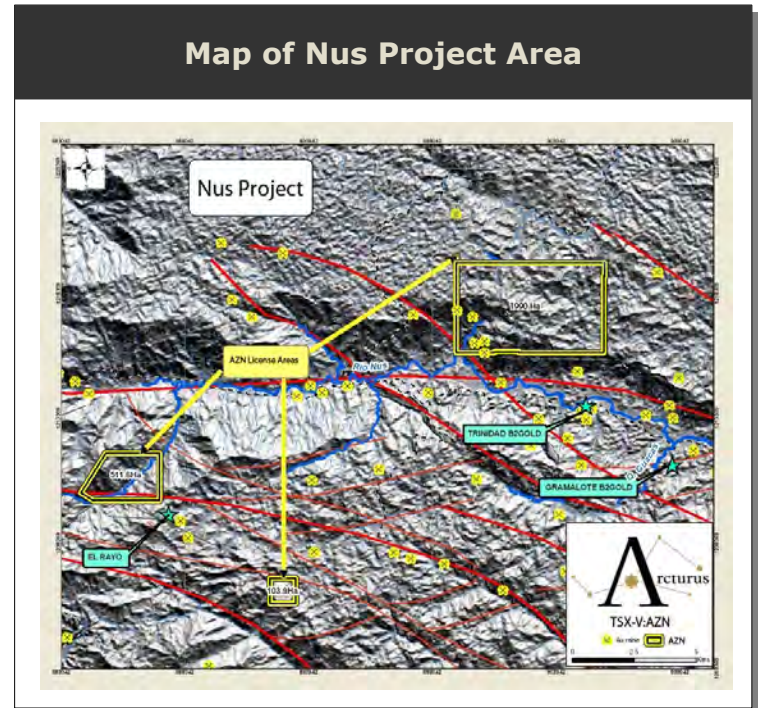


- The Mer claims are located in the Yukon Tanana Terrane and show geology consistent with recent discoveries south of Dawson on both Kinross' (KGC:NYSE) White Gold property and Kaminak's (KAM:TSX-V) Coffee property
- Stream sediment samples taken from drainages on the property show anomalous gold and arsenic with five such samples having gold values in the 95th percentile or greater
- The area covered by these anomalous samples is over 11km long and drains both Yukon Tanana and Slide Mountain Terrane rocks.
- Extensive prospecting and sampling programs are planned for the Mer project in Summer 2011



Gold Project in the Antioquia Department

- 3 license blocks totalling 2605 hectares located in the Department of Antioquia, 85 kilometres from Medellin
- In the immediate vicinity is B2Gold Corp and AngloGold Ashanti's Gramalote Property Zones are less than 5km and 10km, respectively, along strike from the largest license block of the Nus project
- B2Gold's Gramalote Ridge Zone has an inferred resource of 2.4M oz with further drilling underway in the area
- Broad geochemical anomalies in soil surveys and rock geochemistry analysis as high as 5 g/t
- Arcturus Ventures Inc has agreed to acquire a 90% interest in the Nus licenses from Colombian Mines Corporation (TSX-V:CMJ)





Planned Work



Yukon - Whitehorse Copper Belt

- March 2011 - Drilling planned on Lewes River property based on identified targets

Yukon - Finlayson Lake

- June 2011 - Drilling planned for RB and 1st Base properties
- June 2011 - Airborne Survey of Mer property and geochemistry to locate areas of interest

Colombia

- February 2011 - Geochemistry and Prospecting work to follow-up on previously identified anomalies



Contact Information



AZN (TSX-V)

Arcturus Ventures Inc

Blake Macdonald B.A. (Comm.)
President

Phone: 604.688.2000
Fax: 250.339.0986
Cell: 604.961.6431

blake@arcturusventuresinc.com



AZN (TSX-V)

Arcturus Ventures Inc

Brandon Macdonald B.Sc. MBA
Vice President

Phone: 604.688.2000
Fax: 250.339.0986
Cell: 778.938.5330

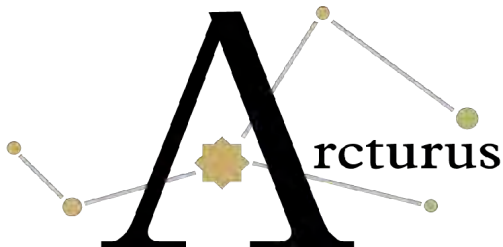
brandon@arcturusventuresinc.com

Whitehorse, Yukon
Cell: 867.334.2089



Disclaimer

This Document contains forward looking information within the meaning of the British Columbia Securities Act, the Ontario Securities Act and the Alberta Securities Act, which involve known and unknown risks, uncertainties and other factors which may cause the actual results, performance or achievements of the Company, or industry results, to be materially different from any future results, performance or achievements expressed or implied by such forward-looking statements. Forward-looking statements are subject to a variety of risks and uncertainties which could cause actual events or results to differ from those reflected in the forward-looking statements, including, without limitation, risks and uncertainties relating to the interpretation of drill results and the estimation of mineral resources and reserves, the geology, grade and continuity of mineral deposits, the possibility that future exploration, development or mining results will not be consistent with our expectations, metal recoveries, accidents, equipment breakdowns, title matters and surface access, labour disputes or other unanticipated difficulties with or interruptions in production, the potential for delays in exploration or development activities or the completion of new or updated feasibility studies, the inherent uncertainty of production and cost estimates and the potential for unexpected costs and expenses, commodity price fluctuations (including uranium, fuel, steel and construction items), currency fluctuations, failure to obtain adequate financing on a timely basis and other risks and uncertainties. Should one or more of these risks and uncertainties materialize, or should underlying assumptions prove incorrect, actual results may vary materially from those described in forward-looking statements. Accordingly, readers are advised not to place undue reliance on forward-looking statements. The words anticipate, believe, estimate and expect and similar expressions, as they relate to us or our management, are intended to identify forward looking statements relating to the business and affairs of the Company. Except as required under applicable securities legislation, we undertake no obligation to publicly update or revise forward-looking statements, whether as a result of new information, future events or otherwise.



Arcturus Ventures Inc

TSX-V : AZN